

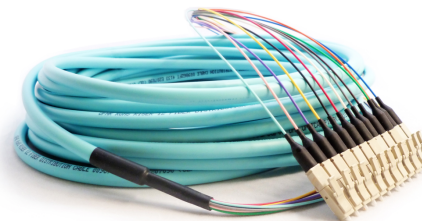
Multi-fibre indoor cables

As their name suggests, these cables contain several fibres in jackets (900 µm, 2 mm or 3 mm), single-mode or multi-mode.

The cables and transitions can be configured to your requirements.

- **Single-mode or multi-mode cables up to 144 fibres.**
- **Different types of cables available: dielectric, armoured, Mil, etc.**
- **Pulling kit and staggered breakout available.**

* See the table of technical characteristics at the bottom of the page.

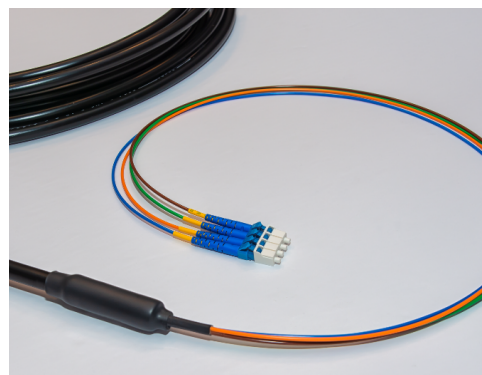


Multi-fibre outdoor cables

The multi-fibre outdoor cables offer the same selection of sub-units (900 µm, 2 mm or 3 mm) as the multi-fibre indoor cables.

- **Single-mode or multi-mode cables up to 144 fibres**
- **Different types of cables available: dielectric, armoured, Mil, etc.**
- **The epoxy sealing option prevents water infiltration.**
- **Pulling kit and staggered breakout available.**

* See the table of technical characteristics at the bottom of the page.



*Technical characteristics

Parameters	Unit	U	A	P	
Polishing (single- or multi-mode)		UPC (SM)	APC (SM)	PC (MM)	Flat
Insertion loss	dB	≤0.20	≤0.30	≤0.30	≤0.5
Return loss	dB	≥-55.0	≥-65.0	≥-25	-
Apex offset	µm	0-50	0-50	0-50	-
Radius of curvature	mm	5-30	5-12	5-30	-
Fibre height	nm	-100/IEC Equation*			
Length tolerance	%	-0/+3			
Transition tolerance	m	-0/+0.1 (tighter tolerance available)			

- All connectors are inspected and tested at 850 nm (MM) and 1550 nm (SM), test data supplied.

The Series + includes geometric qualification.

All products ordered from O-m6 can be customized to meet your requirements.

| Questions? | **Contact us at 450 979-2275** | inf@om6.com

Technical features subject to change without notice