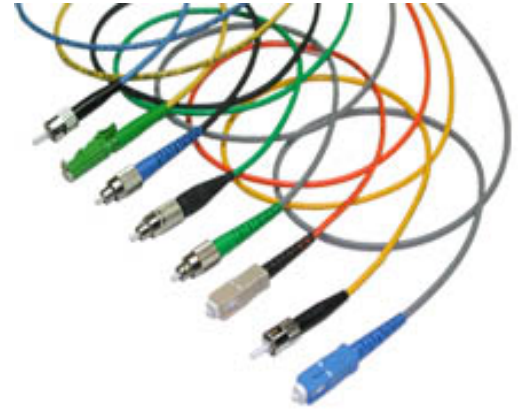


## Specialized fibre cables

From technical drawings or specifications criteria, you will get products that meet the highest quality standards. Whether it is for a simple connector installation or a more complex multi-fibre assembly, try us.

Single-mode and multi-mode fibres with core sizes from 2.3  $\mu\text{m}$  to 1.2 mm.  
Wide selection of jackets and tubings.



We can manufacture assemblies with the following types of fibre materials and jackets:

- Attenuating fibres
- Coreless fibres
- Twin-layer fibre
- Graded index fibre
- Micro-structured optical fibres
- Polarization maintaining fibres\*
- Polyimide fibres
- Doped fibres
- Small core single-mode fibres
- Step index fibres
- ETFE (Tefzel)
- Polyester (Hytrel)
- Polyimide (Kapton)
- Polypropylene
- Polyurethane
- PVC
- PTFE (Teflon)
- PVDF (Kynar)
- Silicone
- Stainless steel\*\*

\* See the polarizing maintaining cable section on the website for more details.

\*\* See the metallic cable assembly section on the website for more details.

All products ordered from O-m6 can be customized to meet your requirements.

| Questions? | **Contact us at 450 979-2275** | [inf@om6.com](mailto:inf@om6.com)

Technical features subject to change without notice